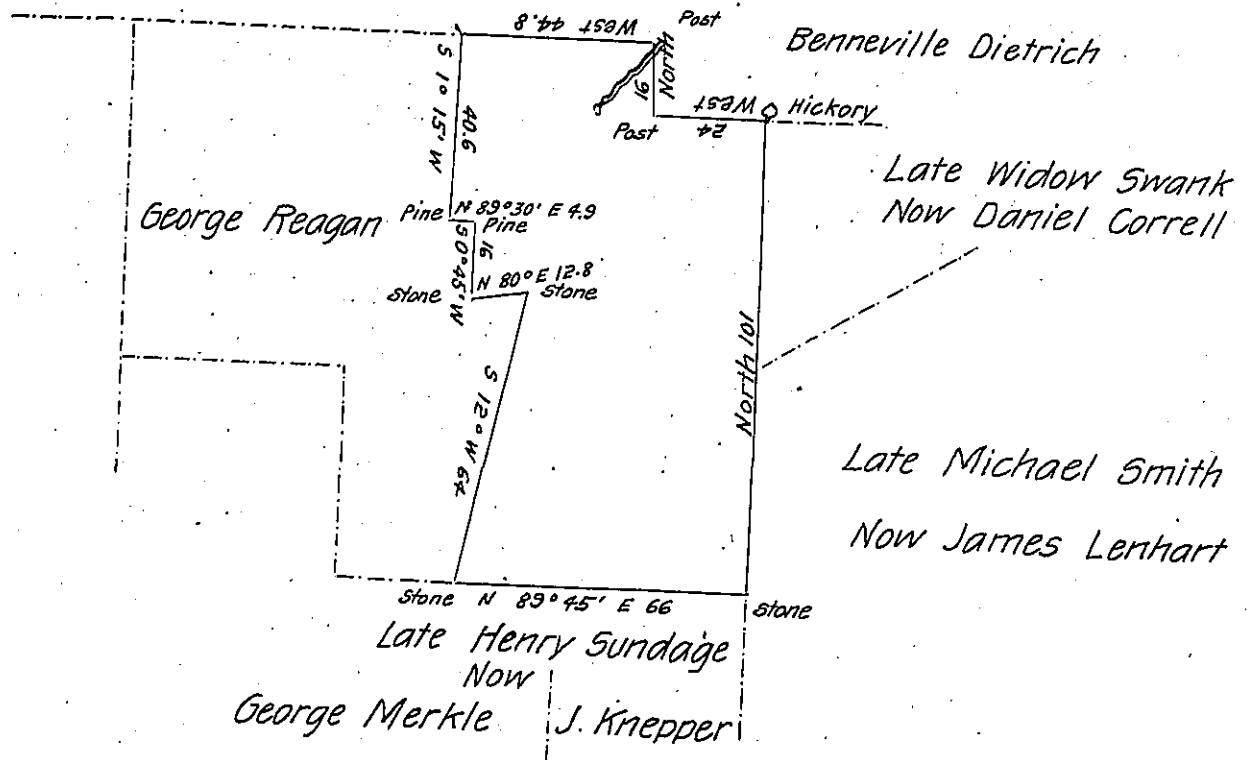


Late Valentine Probst
Now Benneville Dietrich

Late Henry Reichelsterfer



Draft of a tract of land situate in Albany Township in the County of Berks containing Forty one acres Eighty one perches and allowance of six per cent. for Roads, &c. surveyed for Benneville Dietrich & Charles H. Lenhart the Thirteenth day of April 1870 being part of a large tract of seventy nine acres One hundred and seven perches and allowance originally surveyed in pursuance of a Warrant granted to Michael Reichelsterfer & John Reichelsterfer dated the Fifth day of May 1791

Daniel S. Zacharias C.S.

To the Hon J. M. Campbell

Surveyor General

IN TESTIMONY that the above is a copy of the original remaining on file in the Department of Internal Affairs of Pennsylvania, made conformably to an Act of Assembly approved the 16th day of February, 1833, I have hereunto set my Hand and caused the Seal of said Department to be affixed at Harrisburg, this twenty sixth day of September 1906

Isaac D. Brown
Secretary of Internal Affairs